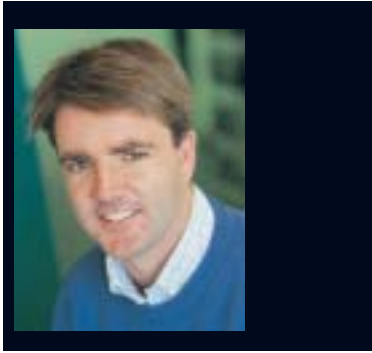


RESOURCECO
THE SUSTAINABLE RESOURCE COMPANY

From the desk of Simon Brown



Simon Brown, Managing Director

CSR BITUMATE

Sales of Recycled products keep improving, it is exciting to see that after 9 years of hard work from every one involved our vast customer base is starting to view our road bases as the equal of any traditional quarry product available in Adelaide.

We have just completed our first major commercial project using 6% cement treated road base at the new Kerry Logistics site at Gillman. The Dublin Landfill site owned and operated by Integrated Waste Services was constructed using more than 10,000 tonnes of recycled drainage aggregates (see story on right).

Our contract crushing division is still developing nicely with major contracts now completed in and around Melbourne. Mike Haywood has just returned from an exiting tour of Europe and the UK and the possibility of further developing opportunities to reuse waste products are enormous.

In general the waste industry is a constantly changing environment and we at Resourceco are extremely excited with the prospects for our future. Over the next few years we will be investing substantially in more effective and efficient equipment from Europe that will see us adding value for reuse to a whole new range of materials.

I would also like to thank all of our customers for their support in the current financial year and look forward to working with you in the last new year as we head down the road to a brighter and more environmentally sound future.

CSR Recycled Products

Bitumate

We are very excited here at CSR Recycled Products with the release of another new product, Bitumate. Bitumate is a graded 20mm minus recycled crushed asphalt that is ideal for lightly trafficked rural roads, rural access roads and rural properties.

Bitumate is made from cold recycled asphalt and because it retains sufficient bitumen content to bind the surface, it becomes a virtually dust-free pavement. This close-knit surface, which can be laid with conventional machinery, provides a pavement that is far stronger than the ordinary, conventional rubble materials normally used on un-sealed roads and this cuts maintenance costs dramatically. In fact, because of its bitumen content, Bitumate actually gains strength as it cures and ages, thus reducing maintenance costs by up to 60%.

Bitumate also increases road safety. With less dust, driver visibility is improved and the chances of accidents are lessened. The bound surface also means there is minimal loose gravel to smash windscreens, puncture tyres or throw you into a spin.

With reduced maintenance costs, reduced replacement costs, reduced dust generation, increased safety and the environmental pluses, the benefits of Bitumate are obvious. We here at CSR Recycled Products are very excited that we are able to take construction debris and reprocess it to turn useless, costly landfill into a useable, safe and economically viable road pavement.

Contract Crushing

Resourceco's Contract Crushing Division has recently completed the crushing of 80,000 tonnes of hornfels for Pioneer Construction Materials in Victoria. Melbourne is well known for the hardness and abrasiveness of its underlying rock and has led the way in recent years in the construction of efficient transport networks. Infrastructure works continued to grow in 2002 and Resourceco's mobile crushing plants have been there. Rock types crushed throughout Melbourne include granite, basalt and hornfels. Resourceco's modern and heavy duty crushing equipment has met the rigorous demands of even the hardest of Melbourne's quarries.

Mobile Crushing Plant and Secondary Circuit



click!
www.resourceco.com.au

New from Resourceco Calfill.

A lightweight fill with high bearing capacity

Local glass and washing powder manufacturer Penrice produce 150,000 tonnes of calcium carbonate as a by-product of their processing. This 'calsilt', as it is termed, is pumped into settling ponds at Osborne. Once dry, it was normally collected and taken to the salt field at Dry Creek.

Penrice is now transporting the 'calsilt' to the Resourceco site where it is blended with fines from their trommel sorting operation, creating a new product called Calfill.

Simon Brown commented, "This is a win, win situation for all concerned. The Calfill has been extensively tested and has proven to be superior to other available materials.



Michael Jones of ABC, Herr Strunk of Zeno and Mike Haywood.

Resourceco Business Update

With the imminent closure of the Wingfield Waste Management Centre (WWMC), Resourceco saw the need to evaluate our business to capitalise on the restructuring of Adelaide's waste disposal. In conjunction with Adelaide Brighton Cement (ABC) Resourceco undertook a 3-week tour of waste management systems and alternative waste fuels for cement kilns in Denmark, Germany and the United Kingdom.

European cement kilns have been burning alternative fuels derived from waste for more than 10 years with extremely positive results, as one German engineer advised us, "If you were to design the perfect kiln for waste incineration you would end up with a cement kiln."

Current strategies for waste management in the Adelaide area post closure are being developed mainly for the receiving; processing and land filling of compactable kerbside putrescible house hold waste. Resourceco believe that there is a need to develop a strategy for the bulky, light, non-compactable commercial and industrial waste that has a calorific value that may be used in the ABC kilns.

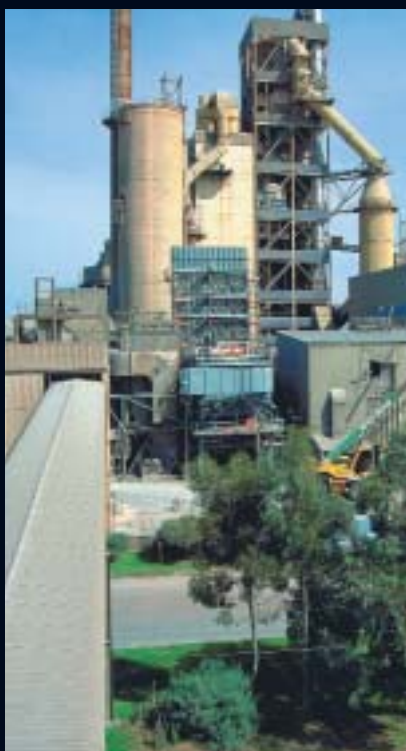
As a result of this tour there was a significant opportunity realised to work with ABC to establish an alternative fuel for their process that would not only assist them to reduce their cost but would also be a sound environmental benefit.

Adelaide Brighton Cement. Birkenhead Plant



Field Compaction and Proof Rolling Trials with Mike Carter, Bob Andrews, Tom Rozenbilds and Simon Brown.

CALFILL



RESOURCECO
THE SUSTAINABLE RESOURCE COMPANY



CSR Resourceco Cement Treated Aggregates Plant

CSR Recycled Products Cement Treated class 2 PM project

CSR Recycled Products have recently completed a project to supply and deliver 8,500 tonnes of cement treated class 2 Pavement Materials to be used in the construction of roadways and container storage areas for a new Transport Yard at Gillman. The Yard to be operated by Kerry Logistics was developed by Built Environs, and this project was a first for CSR Recycled Products, as cement treated products have not previously been supplied from the Wingfield site.

The material was supplied at both 4% and 6% cement treated and was a good test for the pugmill currently in operation at Resourceco. The materials were supplied at a rate of 300 tonnes per hour with a capability to supply 2500 tonnes per day, which could easily increase if the need arose with the installation of a second silo. Following initial trial runs, to establish appropriate belt speeds, the cement content was able to be kept at a consistent value through out the project.

Quality control tests were carried out on the product twice daily, which involved sampling and initial testing at Wingfield, and final testing at the CSR Readymix NATA approved laboratory. In the end it was a very successful project which further highlights the capabilities and applications of CSR recycled pavement materials.

CSR Recycled Products

CSR

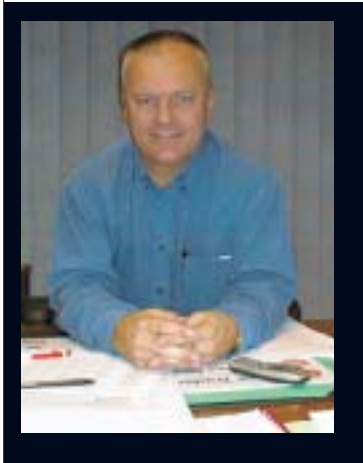
Peter White Profile

Peter took up his role as Manager of CSR's Adelaide Quarry business including the management of CSR Recycled Products in January 2002. Whilst it's a new role, Peter is certainly no newcomer to the construction materials business having previously worked at the Penrith Quarry.

Originally from Sydney, and with 3 years under his belt in SA Peter is really starting to feel at home in Adelaide, loves the lifestyle, is a regular visitor to the Barossa Valley, although he still has away to go to get into Aussie Rules!

Peter is enthusiastic about the future of recycled products believing strongly that the construction materials industry must respond to the communities expectations to minimise it's environmental impact and to promote recycling.

As to the inevitable comparisons between conventional pavement materials and recycled products, Peter explains, "Our business is essentially about providing our customers with the products that they need. Whether the raw material is mined from the ground or delivered to the Wingfield depot, the issues are similar. To be successful, we need to really understand our customer's needs and then consistently deliver on our promises. This means having experienced people who understand the industry and keeping tight focus on the things that are important to customers; quality, consistency and on time deliveries".



Mike's Say

Here at CSR Recycled Products we haven't been standing still. In this edition we profile Peter White, newly appointed CSR Readymix Adelaide Quarries Manager and our boss. In future columns we will be bringing you news of new products, gossip and details of some of the projects we've been involved with. This month we feature our newly launched "Bitumate" product, as well as cement treated pavement materials.

Mike Canny, State Manager, CSR Readymix, SA

Channel 10 visit

In March of this year Jane Reilly, the Channel 10 weather presenter, visited our site as part of her weekly segment showing places of interest in the metropolitan region. With Jane were students from the Port Adelaide Primary School. From the number of questions asked by both Jane and the students, it was obvious that all attending found it interesting.

This is only one of many visits we have had to our site, from corporate organisations, media, government and political representatives. Invariably the comment is that the process of turning construction and demolition waste into aggregates is visually very impressive.

If clients or other interested organisations would like to visit the Resourceco site for a guided tour, please contact Mike Haywood.

Jane Reilly from Channel 10 and Port Adelaide students on site.



Staff Profile: Kevin Fagg

Kevin arrived in Australia from the United Kingdom in 1994. He is married to Julie with two daughters (Jenny aged 19 and Charlotte aged 15). Prior to coming to Australia, he worked for six years on construction of the Channel Tunnel.

In all he has been in the construction industry for thirty years. His hobbies include scuba diving, golf and amateur radio. He is an avid supporter of the Liverpool Football Club and the Adelaide Crows.

Kevin started as relief driver at Resourceco three years ago and now works full-time as supervisor.



Recycled Concrete Aggregate baled and ready to be laid out in the first cell at Dublin

IWS Northern Balefill

IWS has been managing waste since 1982 and has been planning and developing a balefill (landfill) site near Dublin since 1991. On the 22nd of May, 2002 the IWS Northern officially opened. The site spans 1,100 acres and incorporates 30 million cubic metres of residual waste space. This is Australia's first purpose-designed fully clay lined and engineered facility which stores baled waste in exclusive cells. Cell 1, which was recently completed, is the first of 83, all of which are approximately 5 acres in area and will contain up to 340,000 tonnes of waste each. The unique cell design allows for the implementation of immediate landfill gas recovery and complete re-vegetation upon closure of each individual cell.

IWS will continue to receive waste at our centrally located Wingfield Resource Recovery and Transfer Facility, recover resources where possible and then

blend and process the remaining waste into tightly compacted bales. The recovery of resources for recycling is an important aspect of our production process enabling IWS to put into practice the recognised principle of reducing waste to landfill. Once processed, the bales are placed on specially developed enclosed waste transfer vehicles and transported to the IWS Northern Balefill site and stored.

CSR Recycled Product Landfill Aggregates

- 16,000 tonnes of recycled aggregates were used to construct a drainage layer at the base of the cell to allow the drainage of leachate material to an area to be treated.
- This is the first time to our knowledge that recycled aggregates have been used in this application anywhere in the world.



RESOURCECO
THE SUSTAINABLE RESOURCE COMPANY



Corner Hines Road
& Wingfield Road
Wingfield, SA 5013
PO Box, Enfield Plaza
SA 5085
Tel (08) 8347 3329
Fax (08) 8347 3556
ABN 45 068 976 803

CSR Recycled Products

255 Port Road
Hindmarsh
SA 5007
PO Box 254, Hindmarsh
SA 5007
Tel (08) 131188
Fax (08) 8203 8920
www.readymix.com.au

