

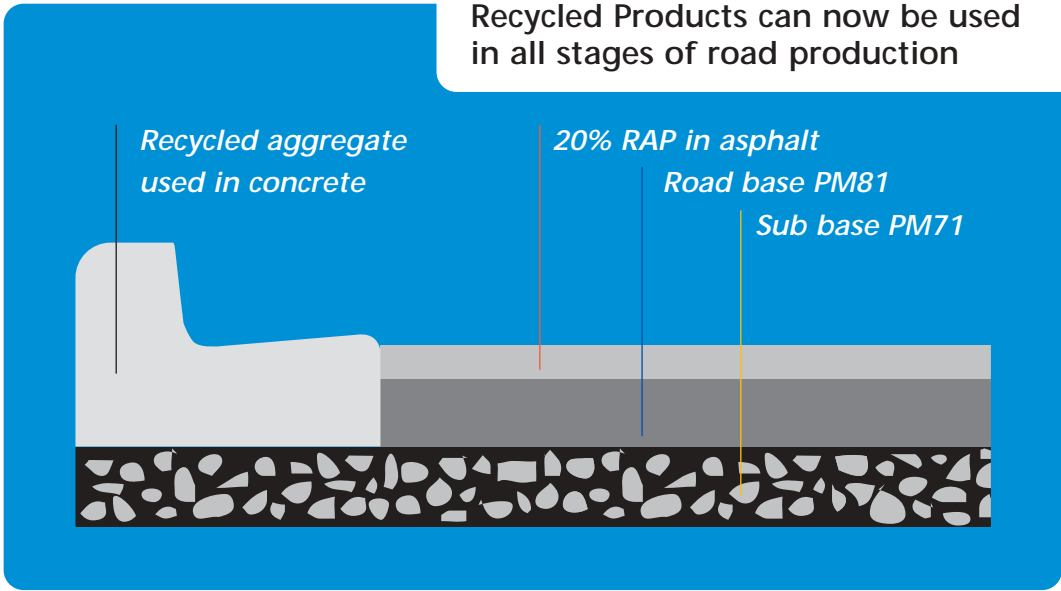


RESOURCECO

THE SUSTAINABLE RESOURCE COMPANY

Our vision: to excel in resource recovery and commercial performance by using innovative technology to transform waste into useable products

Recycled Products can now be used in all stages of road production



being able to reclaim and reuse the bitumen in RAP are substantial. Bitumen currently retails at around \$300 per tonne. The removal of this resource from the waste stream and the increase in employment at the site makes this an extremely exciting initiative and CSR Recycled Products are proud to be a part of it.

CSR Recycled Products are keen to continue to develop new and innovative products for the civil and local government markets that will allow for the efficient and easy disposal of resources that once went to landfill to be reused in new projects and still maintain quality.

Current market volume for the Adelaide Metro concrete industry is approximately 720,000 cubic metres per year. This will require nearly 650,000 tonnes of aggregate. Current market volume for the Adelaide Metro asphalt industry is approximately 350,000 tonnes per year. Based on a 20% ratio of RAP used in the batching process, this will require approximately 70,000 tonnes of materials.

Mark Sneddon
Sales & Marketing Manager
CSR Readymix

CSR Recycled Products gets smarter

In July 1999 CSR Readymix and Resourceco created a joint venture company known as CSR Recycled Products, that was committed to processing and marketing pavement materials sourced from construction and demolition waste.

This venture has been extremely successful and the pavement materials meet product specification and in some instances exceed them.

The site at Wingfield is currently undertaking a \$1.2 million modification that will enable the production of aggregates that are suitable for both concrete and asphalt production.

Recent trials both in Adelaide at a site in Dry Creek and in



Kwesi Sago-Krentsil

Melbourne at Hoppers Crossing have shown extremely positive results in the use of recycled aggregates for concrete.

Kwesi Sago-Krentsil, Senior Research Scientist at CSIRO Melbourne, recently presented a report on the use of recycled aggregates to Readymix staff at CSR Readymix, Hindmarsh.

Transport SA have indicated that they are willing to allow up to 20% recycled asphalt (RAP) in new road construction, and we believe this will increase rapidly in line with the Eastern States that are already using in excess of 30% RAP. The savings to industry in

How using CSR Recycled Products will save you money

CSR Recycled Products' range of quality products have a density factor of 1.92, which is approximately 15% lighter than traditional quarry products that average 2.3.

The chart shows how CSR Recycled Products advantage will benefit the user.

	Length	Breadth	Depth	Density	Tonnes	Cost/Tonne	Total
CSR Recycled Products	100m	x 50m	x 0.15m	x 1.92	= 1440	x \$8.80	= \$12,672
Traditional quarry product	100m	x 50m	x 0.15m	x 2.3	= 1725	x \$8.50	= \$14,662

Now calculate the cost difference using your dimensions

	Length	Breadth	Depth	Density	Tonnes	Cost/Tonne	Total
CSR Recycled Products	x	x	x	1.92	=	x \$	= \$
Traditional quarry product	x	x	x	2.3	=	x \$	= \$

95% of the total volume of products delivered to our site, are reclaimed, processed and sold into existing marketplaces.



From the desk of Simon Brown

The next few months at Resourceco are an exciting time for us with the planned commissioning of a new screening plant that will enable our company to expand our quality range of aggregates as well as enabling us to process asphalt profiles (RAP). Once installed we will have the ability to produce a full range of pavement materials that meet specification, as well as a range of aggregates for concrete batching and RAP for asphalt production.

Both of these new product ranges are being widely used interstate, asphalt plants are now able to put a maximum of 30% RAP back through their plants. Recycled asphalt contains as much as 4% bitumen, with this being the most expensive component in the mix, large savings can be realised by using as much RAP as possible. We believe there is an opportunity to produce and market up to 120,000 tonnes of RAP and concrete aggregates in the next financial year.

Also in the coming year Resourceco in conjunction with CSR Recycled Products will be sponsoring the Civil Contractors dinner.

In this edition are details of the KESAB Metropolitan Environment of the Year Awards. We are proud to be sponsoring The Resourceco Award in the building and demolition industry.

Simon Brown
Managing Director



See how it's done

Converting industrial and demolition waste into recyclables is not a glamour business, however, it is an interesting process and one that lends itself to visual promotion. On the premise that a look is worth a thousand words, we have developed a corporate video of the whole operation. We show the process from receipt of waste at our Wingfield depot to final use of recyclables in suburban roads.

If you would like to view a copy, please phone Mike Haywood at Resourceco on (08) 8347 3329.



click

Visit the Resourceco website at www.resourceco.com.au

6,000 native trees will be planted on our site by 2005

We are the largest recycler of construction and demolition waste in South Australia.





Methane gas from the Wingfield Waste Management Centre and our site at Wingfield power up enough generators to supply some 3,000 households per day.

Well deserved award

We decided to present an award to the City of Port Adelaide Enfield Council. We certainly like to forge links with major suppliers and customers but there was much more to it than that. This Council not only supplied 15,000 tonnes of waste to us for the calendar year 1999, but it had purchased from us 15,000 tonnes of recyclables.

That of course is the ideal achievement and one we chose to recognise. At a ceremony at the Council chambers in January 2000, Mike Haywood of Resourceco presented the Mayor, Joanna McKluskey with an appropriate framed certificate. Paul Davos, the Director of Environmental Services said that it was important for local government and industry to work together to ensure that we use our resources in a way which maintains a high standard of product but in a way which is sustainable.

The dumping of concrete landfill was costly and wasteful and the opportunity to work with Resourceco to show that a viable high quality product could be achieved has meant significant cost savings to this council and has enabled the extension to our Cavan Landfill site.

Port River Expressway

There is much excitement in the City of Port Adelaide with the recent announcement by Premier Olsen and Minister Laidlaw of the third river crossing at Port Adelaide highway that will join the South Road Connector to Port Adelaide.

This is a major opportunity for the Western Suburbs and we wait with interest to see how the project comes together and any opportunity to use recycled products.

The third river crossing will open up the Port Adelaide area and will divert much of the heavy traffic away from the centre corridor and The Causeway, cutting transport costs and allowing easier passage to our major waterways. Once the Alice Springs to Darwin Rail link goes through, all goes well for the State. Resourceco congratulates all involved in working towards these two initiatives and are excited at the opportunities for our company as a result.

Resourceco now directly or indirectly employs in excess of 40 people around Australia.

500,000 tonnes of product is processed at our site each year. 5000 tonnes of steel is recovered and recycled each year

Waste or resource?

KESAB has launched the Year 2000 Metropolitan Environment Awards.

The Environment Awards recognise best practice and cleaner production through local government and industry, and encourage business to showcase environmental initiatives.

Building environmental care into on ground action reflects a contemporary approach to operating and managing any business in today's competitive world.

Categories to be judged include solid waste management, hard surface cleaning processes, recycling, green organics management and resource recovery in the building and demolition industries.



The Awards encourage businesses to demonstrate on site practice and strengthen networks to build a more sustainable environment. Over the past two years the Awards have grown in stature and are recognised by the EPA and local government as setting the benchmark, profiling high achievers and levels of excellence in respective category entries.

Resourceco is a sponsor of the 2000 KESAB Environment Awards. We will be working with our clients in coming months to identify best practice and environmental entry criteria.

Entries close July 31, 2000. Contact Alison Saunders at KESAB on 8338 1855.

Support from Business SA

With the increasing costs of waste to landfill and greater awareness of environmental concerns, alternative waste management options are being considered. There are a large number of firms in South Australia that are offering alternatives to landfill for some waste materials. This is not just in the more common areas of paper, glass or steel but it includes materials such as green wastes (wood, tree prunings and lawn clippings) and recovery of building materials (concrete, asphalt, etc.).

Many of these companies, like Resourceco, are able to establish and grow businesses which not only create employment opportunities but assist in reducing waste to landfill.

Business SA has specifically been working with a number of these firms to establish an industry association called the Resource Recovery Association which represents a number of firms predominately involved in the recycling of building and demolition waste. As this industry continues to grow it is envisaged the association will play an important role in promoting the importance of resource recovery in this area to industry, government and the broader community.

With increasing pressure on the profit margins, many companies cannot afford to ignore the potential savings that may be available through alternative waste disposal options.

Improving our environment through managing our wastes and turning them into resources provides additional benefits which are important to all of us.

Andrew Thiele
SAECCI Environment Officer
Business SA

Resource Recovery Association

It was very evident from almost day one when we commenced as Mobile Reclaimers that the industry as a whole needed to join together and form an association to share ideas and to assist each other when working with such organisations as the EPA and local and state governments.

At the end of 1999 the Resource Recovery Association started to meet at Enterprise House on Greenhill Road and early in 2000 the association was formed.

The Association meets monthly and is actively lobbying for assistance for the industry in areas associated with developments for new and existing sites.

The EPA has representation on the Association and John Blumson regularly attends. He provides a valuable contribution with the information and assistance he supplies. Transport SA have also attended meetings and make themselves available if invited.

The Association has strong membership with representation from major industries,

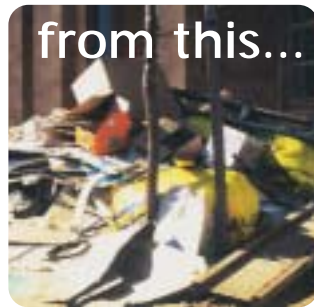
Foundry Sand

Resourceco has worked very hard with the EPA to develop a strategy for the processing of foundry sand at the Wingfield site.

All product entering the site has been tested to ensure that it complies with clean specifications. We now receive about 500 tonnes of product to the

site each week. The product is then screened through our trommel plant where steel and waste are removed. The product is then blended into the road base.

We are currently exploring opportunities to screen the product down to a size that will allow us to supply the sand back to the foundries.



Environmental code for industry helps to build a better environment

After extensive consultation with various industry organisations, government agencies and the community, a stormwater pollution prevention code of practice for the building and construction industry has been introduced by the Environment Protection Agency (EPA), with support from the State's leading environmental organisation, KESAB.

The code of practice affects all areas of the demolition, building and construction industry. It aims to assist builders, sub-contractors,

developers, architects, construction companies, local government organisations waste removalists, demolition companies and the DIY market.

Why protect the environment? Stormwater acts as a carrier for pollutants picked up from various sources including private properties, public places and building sites. These pollutants are then transported through drains to our waterways and coasts.

What does a code of practice do? The code of practice for the building and construction industry aims at protecting the environment. It provides a range of positive environmental actions to reduce the building and construction industry's impact on the environment. And that's just good business sense.



30,000 tonnes of foundry sand is processed for use as either road base or to be sold back to the foundries.

RESOURCECO
THE SUSTAINABLE RESOURCE COMPANY

Corner Hines Road
& Wingfield Road,
Wingfield, SA 5013
PO Box Enfield Plaza
SA 5085
Tel (08) 8347 3329
Fax (08) 8347 3556
ABN 45 068 976 803